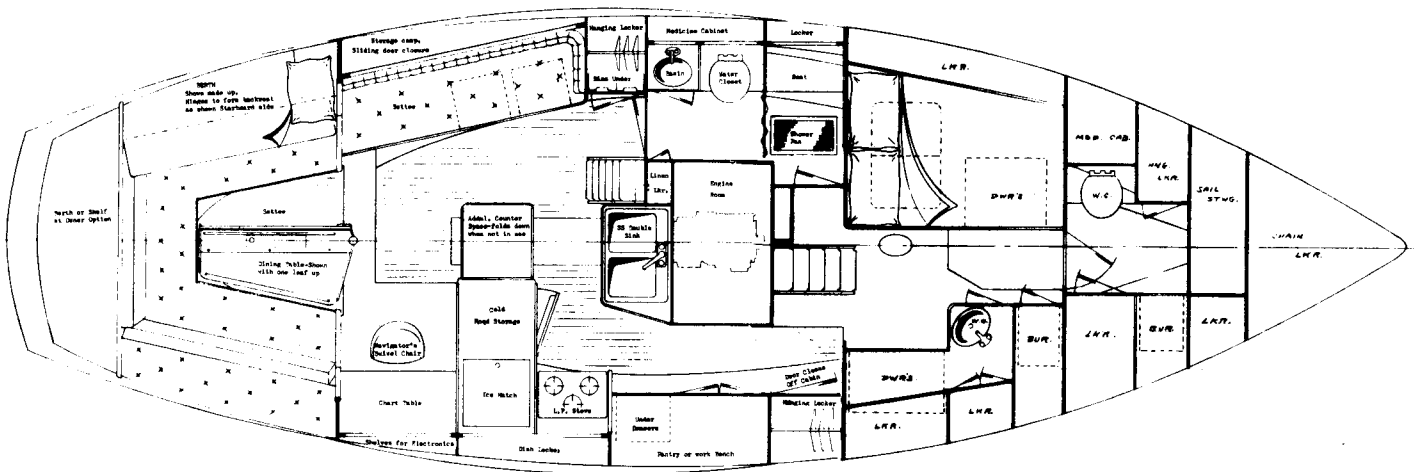


TARTAN OFFSHORE CRUISING KETCH



TARTAN 
Marine Company

Grand River, Ohio 44045

TARTAN OFFSHORE CRUISING KETCH

Condensed Specifications

Designer: SPARKMAN & STEPHENS, INC.

Builder: TARTAN MARINE COMPANY

L.O.A.41'4"	Displacement24,300 lbs.*	Engine..... Lehman Ford Diesel, 80 BHP
D.W.L.32'4"*	Lead Ballast.....9,000 lbs.	Fuel Capacity..... 128 gallons
Beam13'4"	Sail Area	Fuel Consumption..... Under 2 gals/Hr.
Draft.....4'9"*	100% Fore Δ787 sq. ft.	Water Tankage.....3 Tanks, 167 gallons
	Vertical Clearance57"*	Cruising Speed under Power.....7.5 Knots

*These dimensions will be affected by loading.

BUILDER'S COMMENTS:

We planned this boat from the beginning for a couple who would live aboard her, with ample quarters for guests and children. The accommodations evolved from the initial decision to include a great aft cabin, reminiscent of that in YANKEE. Three layouts are available for the forward cabins to customize the vessel for each owner's requirements.

The ketch rig keeps the number of sails required, and their sizes, to an easily managed amount. It further provides power even in light air, while in heavy weather sail area can be reduced 40% by sailing with jib and mizzen alone. The permanent mizzen centerline backstay eliminates the normal bother of adjusting running backstays.

The hull form carries a long keel, 9,000 lbs. lead ballast and skeg mounted rudder to provide maximum stability, good tracking and maneuverability. While drawing less than 5', upwind performance is exceptional. The boat's balanced helm and stiffness make it not only a joy to sail, but very easy to handle by a couple.

Listed below are a *few* of the standard features of the Tartan Offshore Cruising Ketch.

<ul style="list-style-type: none"> 14 Opening Ports 5 On-deck Hatches Insulated Decks Full engine instrumentation and audible alarm Primary and Secondary fuel filters Throttle and shift control on pedestal 55 amp Alternator Fresh water engine cooling Sound-deadened engine compartment 180 amp. hour extreme heavy duty engine starting battery 180 amp hour ship's service battery bank Circuit breakers on all dist. circuits 110 volt shore power with circuit breaker dist. Hot and cold pressure water Stall shower Pedestal steering with 5" Ritchie compass Bow and stern pulpits Full lifelines with boarding gates port and star-board Lewmar #43 genoa sheet winches Bariant #21 genoa and main halyard winches Bariant #21 main sheet winch Bariant #10 mizzen and outhaul winches Three Bariant winch handles #4 size Snatch blocks, all sheets, etc. 	<ul style="list-style-type: none"> Roller bearing main sheet traveller 12 cu. ft. Icebox, well insulated Manual bilge pump Two power pumps Two dorade boxes, three cowls High bulkwarks forward Midships hawse holes and cleats L.P. gimballed stove, with thermostatically controlled oven Full size chart table with upholstered chair 4" foam rubber cushions with removable nylon fabric covers Two fire extinguishers Fog horn Ship's bell Six life preservers Interior overhead lights, red or white Two marine heads Ball valves on all thru hulls Dining table — seats eight Oversize masts with double lower shrouds Wooden cabin soles Teak and Mozambique interior
---	--

F.O.B. Grand River, Ohio \$74,000

For full specifications and brochure, write

TARTAN MARINE COMPANY
Grand River, Ohio 44045